



1. Click printer icon (top right or center bottom).
2. Change "destination"/printer to "Save as PDF."
3. Click "Save."



LC15. Short Film – *The Silent Child*

Student Name: _____ Student ID Number: _____

Instructor: _____ Level: _____ Date: _____

For media links in this activity, visit [the LLC ESL Tutoring website for Upper Level SDLAs](#). Find your SDLA number to see all the resources to finish your SDLA.

Section 1: Introduction

Deafness means the inability to hear or hearing loss. Someone who is *deaf* has profound hearing loss. A person can be born deaf or become deaf later in life due to illness, work-related injury, being around loud equipment, or old age. All over the world, there are about 432 million adults and 34 million children who have profound hearing loss. More than 70 million deaf people use sign language to communicate. Think about your experiences with deafness and sign language and answer the questions below.

1. Is there sign language in your native country?

2. How are deaf people treated in your native country?



For this SDLA, you will learn more about what it is like to be deaf by watching the short film *The Silent Child*. This short film features British Sign Language and takes place in the England. The film was written by Rachel Shenton. Although the short film focuses on the communication challenges of a six-year old deaf girl, the film was inspired by Rachel's own experiences with her father losing his hearing. The film stars Rachel Shenton and Maisie Sly, a profoundly deaf girl. *The Silent Child* won the Oscar for Live Action Short Film in 2018. Before watching the short film, you will learn more about deafness and sign language.





Section 2: Vocabulary

Below is a list of vocabulary words that relate to the short film *The Silent Child*. Match the letter of the definition for each word. Check your answers at learnersdictionary.com.

- | | | | |
|-----------|------------------|----|---|
| _____ 1. | communicate | a. | partial or total inability to hear. |
| _____ 2. | deaf | b. | a person who translates the words that someone is speaking into a different language |
| _____ 3. | hard of hearing | c. | not able to hear well |
| _____ 4. | hearing | d. | to understand what people are saying by watching the movement of their lips |
| _____ 5. | hearing aid | e. | an electronic device worn in or on the ear to help a person who has hearing problems to hear better |
| _____ 6. | interpreter | f. | to place (a child with special educational needs) in regular school classes |
| _____ 7. | lip read | g. | an electronic device that is surgically implanted behind the ear that allows people with hearing loss to hear some sounds |
| _____ 8. | mainstream | h. | the ability to hear |
| _____ 9. | sign language | i. | a system of hand movements used for communication especially by people who are deaf |
| _____ 10. | cochlear implant | j. | to give information about (something) to someone by speaking, writing, moving your hands |

Section 3: Learn About Deaf People

Part 1: True or False

Read each sentence and guess whether the information is true or false. Write a T for true. Write an F for false. When you are finished, check your answers.

- _____ 1. There is only one sign language used by all deaf people around the world.
- _____ 2. Sign language(s) have specific grammar rules like spoken languages.
- _____ 3. Most hearing parents of deaf children learn sign language.
- _____ 4. Talking louder or shouting at people with hearing loss helps them understand you better.
- _____ 5. Deaf people can speak.
- _____ 6. Deaf people can drive cars.
- _____ 7. All deaf people can lip-read.
- _____ 8. A person can only understand about 30% of what's being said by lip-reading.
- _____ 9. Hearing aids or cochlear implants restore hearing loss to normal.
- _____ 10. Deaf people can do anything hearing people can except hear.

Answers: F, T, F, F, T, T, F, T, F, T





Part 2: Guess the Percentage

Read each question and guess the percentage. Write the letter of the percentage you think answers the question. When you are finished, check your answers.

- _____ 1. What percentage of deaf children are born to hearing parents?
 - a. 10%
 - b. 25%
 - c. 90%
 - d. 50%
- _____ 2. Around what percentage of deaf children are exposed to little or no language at home?
 - a. 50%
 - b. 70%
 - c. 15%
 - d. 80%
- _____ 3. Around what percentage of deaf children use sign language at home?
 - a. 75%
 - b. 50%
 - c. 100%
 - d. 40%
- _____ 4. Around what percentage of British deaf children attend mainstream school with no specialist support in place?
 - a. 78%
 - b. 5%
 - c. 22%
 - d. 43%

Answers: C, B, D, A

It is important to know that people who are deaf are just like you and me. They can do anything hearing people can do except hear. When you meet someone who is deaf, and you don't know sign language, don't worry. You can communicate with someone who is deaf by writing notes back and forth.

[Watch Dear Hearing People](#)





Section 4: Watch and Discuss *The Silent Child*

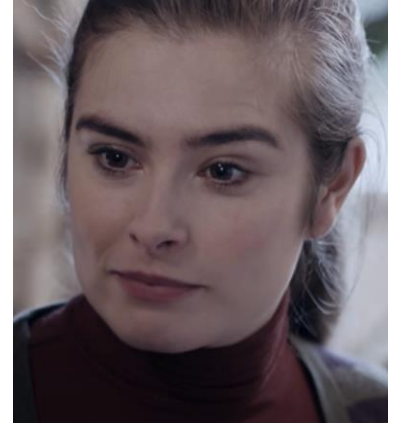
Now that you have learned more about people with hearing loss and deafness, you are ready to watch the short film. Before you watch, meet the important characters from the film below.



Libby: six-year-old deaf girl



Sue: Libby's mom



Joanne: Libby's social worker

[Watch the film](#)

Comprehension and Discussion Questions

1. What kind of experience does Libby have at the table with her family?

2. Describe the relationship that Libby has with her mother.





English Self-Directed Learning Activities

Language Learning Center 77-1005, *Passport Rewards*

LC 15. Short Film—*A Silent Child*

3. Why does Sue tell Joanne to stop working with Libby?

4. Why do you think it's important to Sue that Libby lipreads?


5. Why does Libby need a support specialist in school? How did it make you feel when she doesn't get one?





Section 5: What Did I Learn

Complete this table BEFORE meeting with a tutor.

Communication Skill	I can't do this YET. 	I can do this WITH help. 	I can do this WITHOUT help. 	I can TEACH this to a classmate. 
I can talk about deaf people and sign languages.				
I can define important words related to the education of deaf people.				
I can correct myths and misconceptions about deaf people.				
I can talk about different perspectives relating to deafness and sign language use.				

Here are some words/phrases I need to practice.

Good Job!

Now make an appointment

with a tutor on the LLC ESL Tutoring Website

(www.mtsac.edu/llc/passportrewards/llctutoring).








Section 6: Practice with a Tutor!

After completing the self- assessment, meet with a tutor and give this completed SDLA to the tutor. The tutor will review your work with you.

Grading Rubric

Possible Points	Need Practice  (0-1 Point)	Good Job  (2-3 Points)	Excellent Work  (4-5 Points)
Content	Not enough information provided in responses and often does not use correct vocabulary.	Provides most important information in responses and some of the time uses correct vocabulary.	Provides all necessary information in responses and most of the time uses correct vocabulary.
Skill: Speaking	More than 6 mistakes saying words; needs guessing more than 3 times.	Not more than 5 mistakes saying words; needs guessing on 1-2 words or sentences.	Not more than 2 mistakes saying words; needs no guess about meaning.
Oral Fluency	Speaks mostly in phrases, individual words; many pauses.	Sometimes speaks in complete sentences; several pauses.	Speaks in complete sentences; a couple pauses okay.

*Students must receive at least 10 points to move on

Possible Points: _____ / 15

Tutor Comments:

Congratulations! Keep going.

You have successfully completed this SDLA and are ready to continue to the next.

Work on this more.

You have not yet mastered this SDLA. It is recommended that you complete it again.

Tutor Signature: _____

Date: _____

