

MT. SAN ANTONIO COLLEGE

2018 Educational and Facilities Master Plan

HMC ARCHITECTS // COLLABORATIVE BRAIN TRUST

November 21, 2016

Updates

- / NOVEMBER INTERVIEWS
- / LANDSCAPE MEETING
- / FARM MEETING AND TOUR
- / PULL PLANNING WORKSHOP
- / CHANGES TO MPSTF MEETING SCHEDULE

NOVEMBER INTERVIEWS



LANDSCAPE MEETING



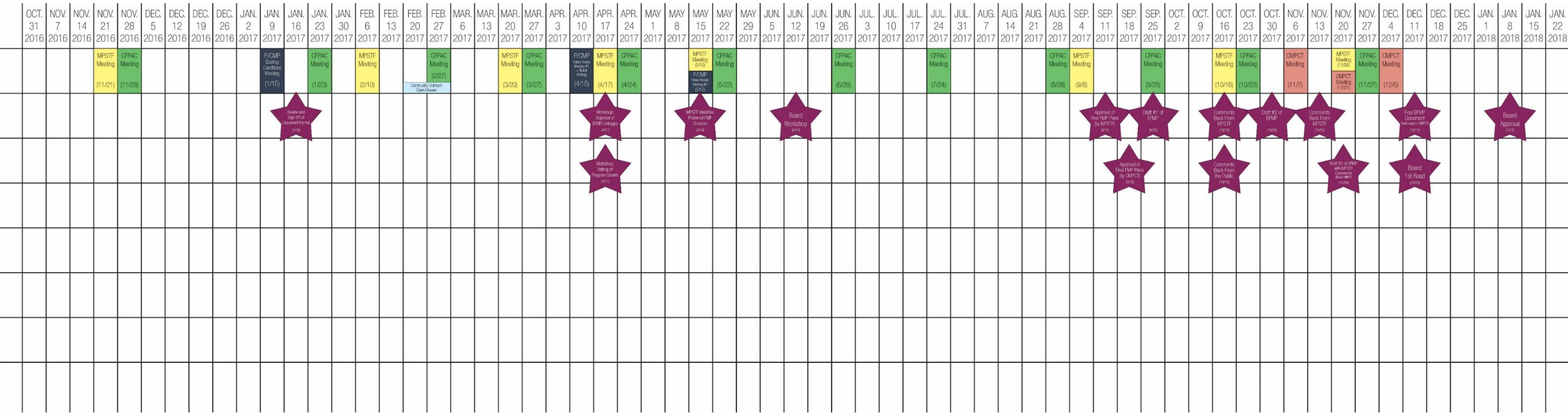
FARM MEETING AND TOUR



FARM MEETING AND TOUR



PULL PLANNING WORKSHOP



CHANGES TO MPSTF MEETING SCHEDULE

POTENTIAL MEETING DATE CHANGES:

- Move April 2017 meeting to Friday so we can have a longer meeting
- Change May 2017 meeting to Friday, May 19th so we can have a longer meeting
- Possible to have a June 2nd meeting?
- Change September 2017 meeting to Friday, September 8th so we can have a longer meeting
- Remove November 2017 meeting from schedule



Favorite Places









Data Portfolio

/ External Scan

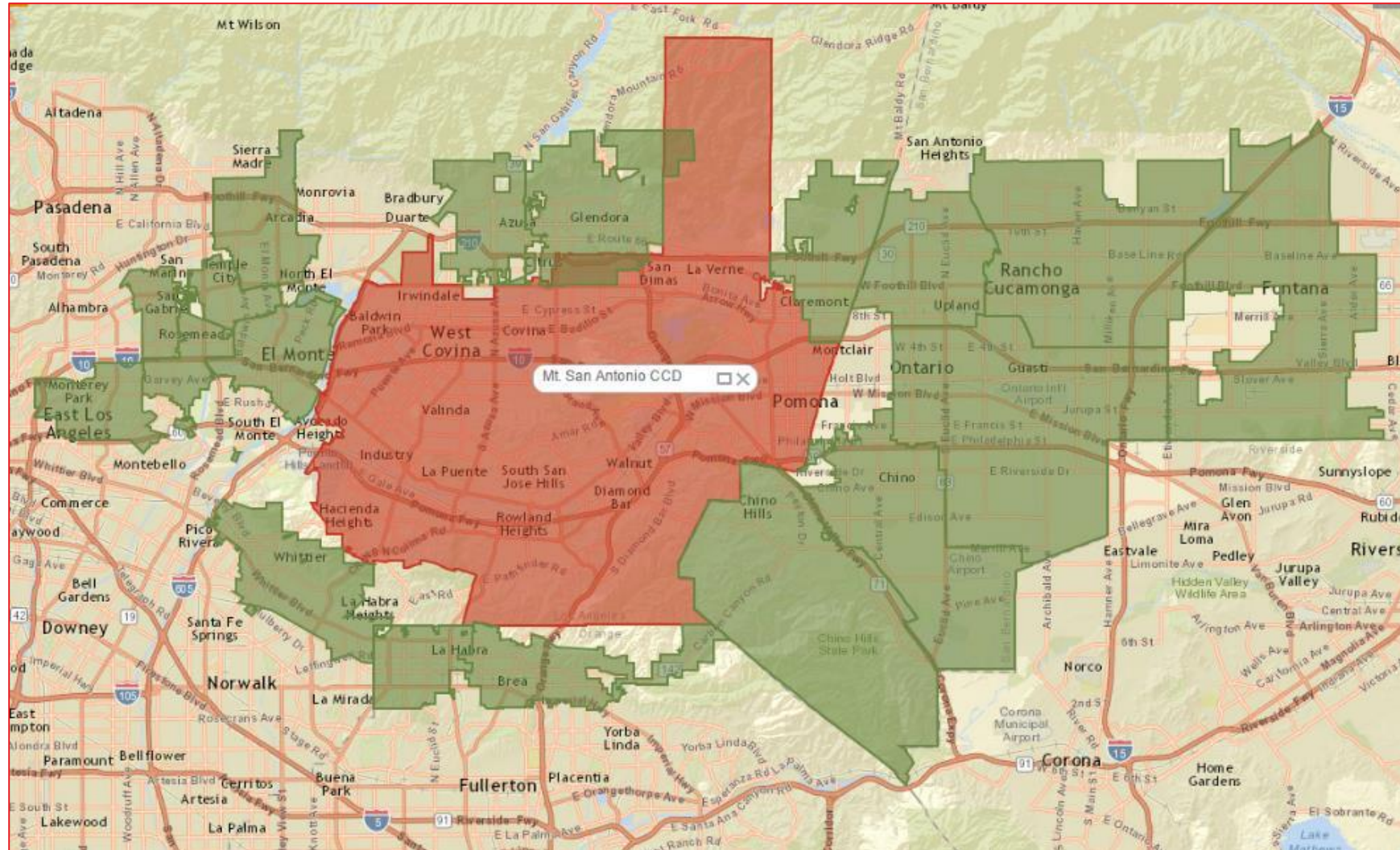
/ Internal Scan



External Scan

Analysis of the Population that the College Serves

District and Service Area



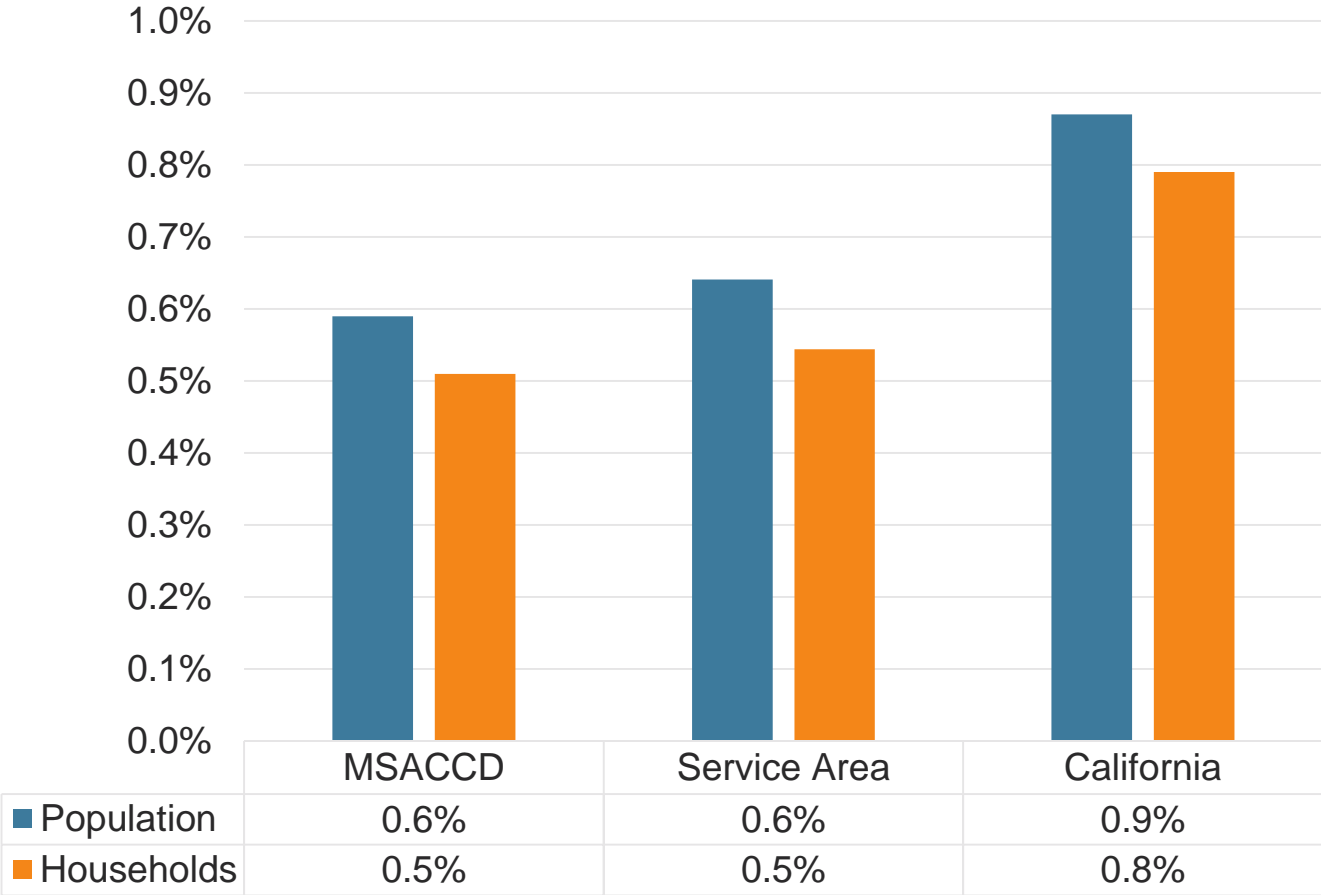
Population Projections

City	2016 Population	2025 Population	2035 Population	Compound Annual Growth Rate
District Cities				
Alhambra	85,681	88,800	92,400	0.4%
Baldwin Park	77,354	79,613	82,200	0.3%
Covina	48,499	49,297	50,200	0.2%
Diamond Bar	57,559	60,210	63,300	0.5%
Industry	200	200	200	0.0%
Irwindale	1,556	1,753	2,000	1.3%
La Puente	43,204	47,382	52,500	1.0%
La Verne	32,371	33,862	35,600	0.5%
Pomona	162,027	177,914	197,400	1.0%
San Dimas	34,037	34,769	35,600	0.2%
Walnut	30,186	31,578	33,200	0.5%
West Covina	110,096	114,772	120,200	0.5%
District Total	682,769	720,150	764,800	0.6%

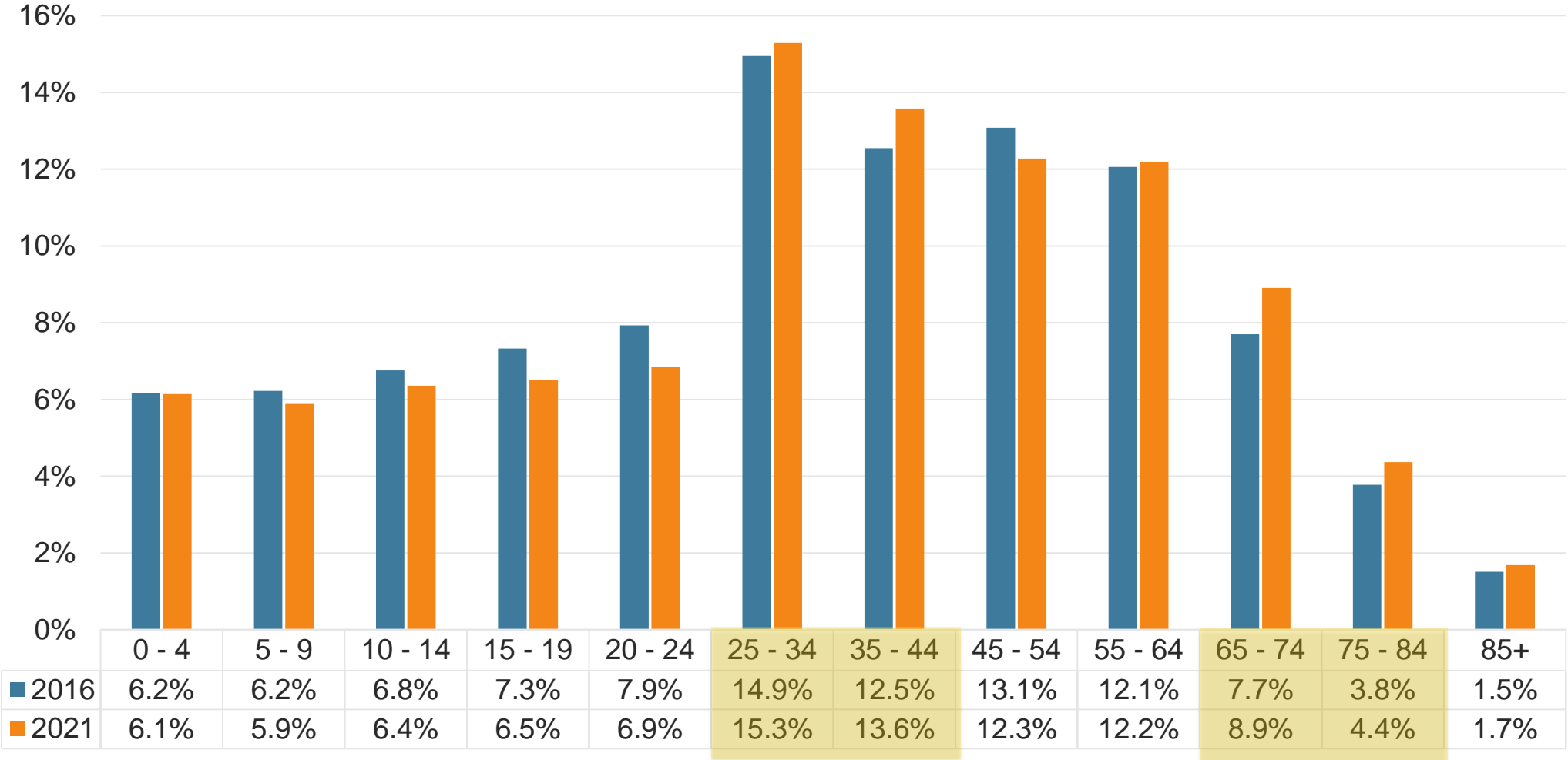
City	2016 Population	2025 Population	2035 Population	Compound Annual Growth Rate
Service Area Cities				
Arcadia	58,487	61,172	64,300	0.5%
Azusa	48,406	50,890	53,800	0.6%
Chino	83,842	94,193	107,200	1.3%
Chino Hills	75,706	76,971	78,400	0.2%
Claremont	35,691	36,721	37,900	0.3%
El Monte	120,731	129,547	140,100	0.8%
Fontana	211,290	232,724	259,100	1.1%
Glendora	51,679	53,999	56,700	0.5%
La Habra	60,744	61,476	62,300	0.1%
Montclair	38,180	40,790	43,900	0.7%
Monterey Park	64,852	70,649	77,700	1.0%
Ontario	196,661	243,075	307,600	2.4%
Rancho Cucamonga	164,062	165,494	167,100	0.1%
Rosemead	54,896	56,391	58,100	0.3%
San Gabriel	41,498	43,617	46,100	0.6%
Temple	36,431	37,626	39,000	0.4%
Upland	74,774	77,297	80,200	0.4%
Whittier	86,809	88,538	90,500	0.2%
Service Area Total	1,504,738	1,621,171	1,770,000	0.8%
Grand Total				
	2,187,507	2,341,321	2,534,800	0.8%

Population Growth

Population & Household Growth Rates 2016



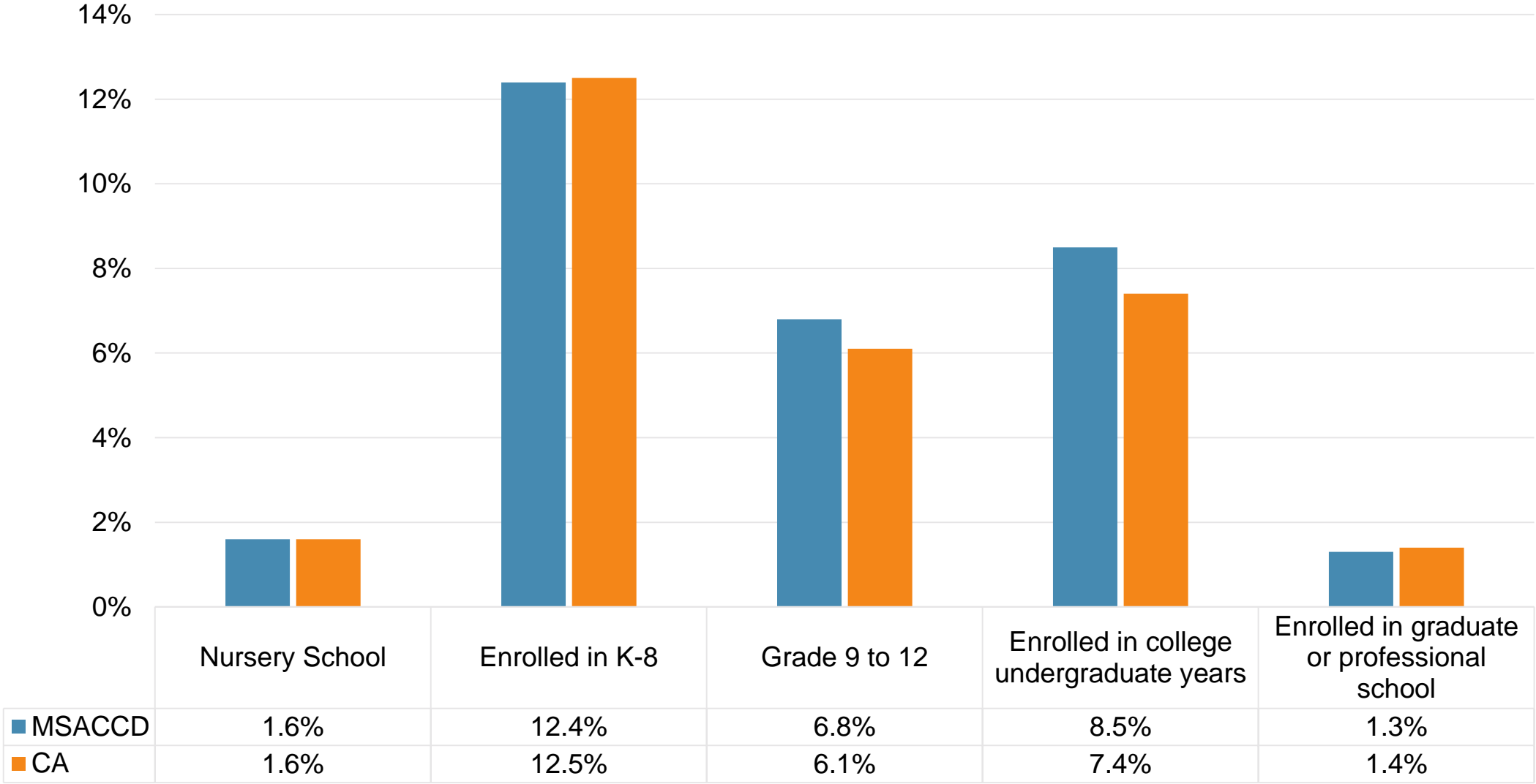
MSACCD Age Profile



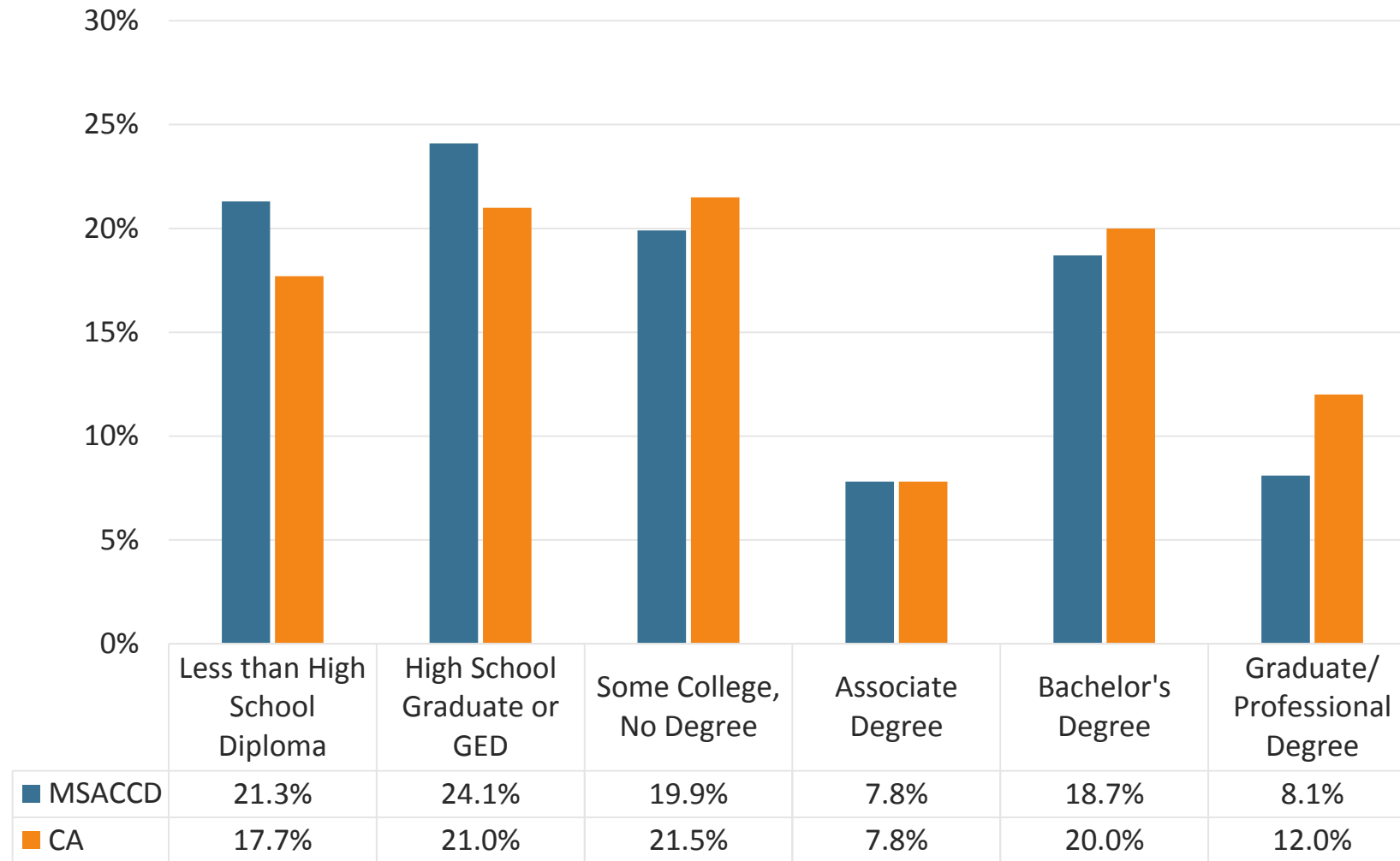
MSACCD Race and Ethnicity

MSACCD Population by Race and Ethnicity			
Race/Ethnicity	2016	2021	Change (Percentage Points)
White Alone	45.3%	44.9%	-0.4%
Black Alone	3.4%	3.2%	-0.2%
American Indian Alone	0.8%	0.8%	
Asian Alone	22.8%	23.4%	+0.6%
Pacific Islander Alone	0.2%	0.2%	
Some Other Race Alone	23.3%	23.3%	
Two or More Races	4.2%	4.2%	
Total	100.0%	100.0%	
Hispanic Origin (Any Race)	57.2%	58.1%	+0.9%

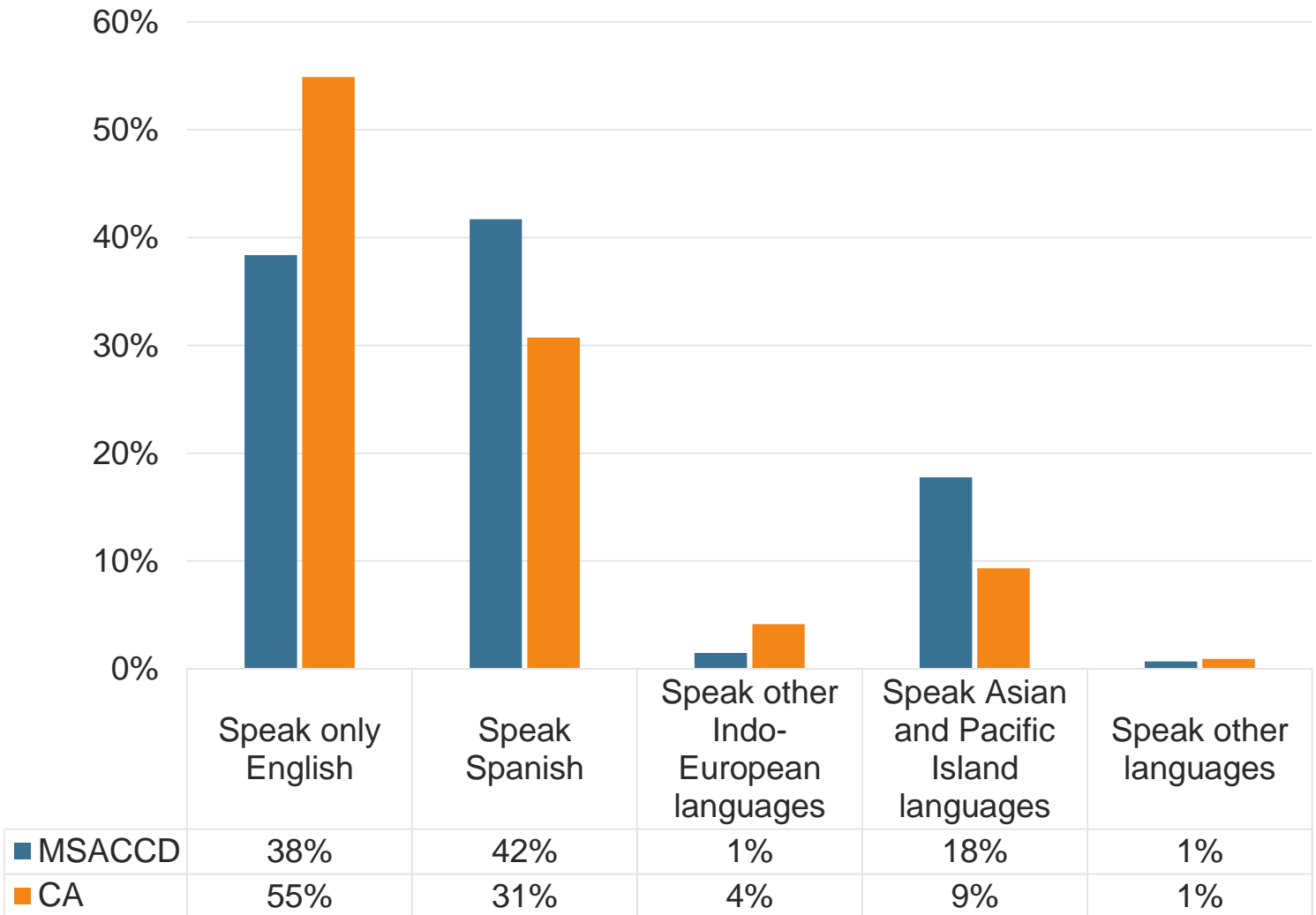
School Enrollment - Age 3+



Highest Educational Attainment – Age 25+



Language Spoken at Home



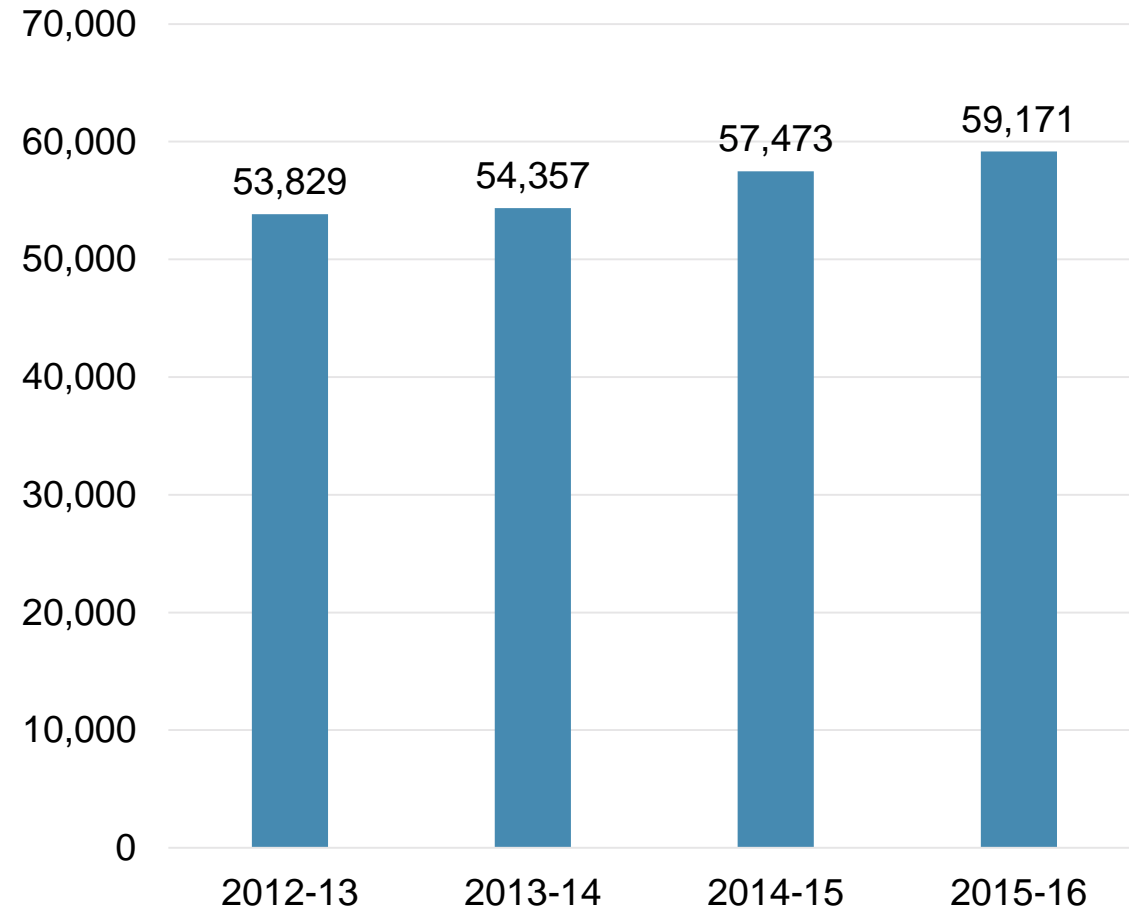


Internal Scan

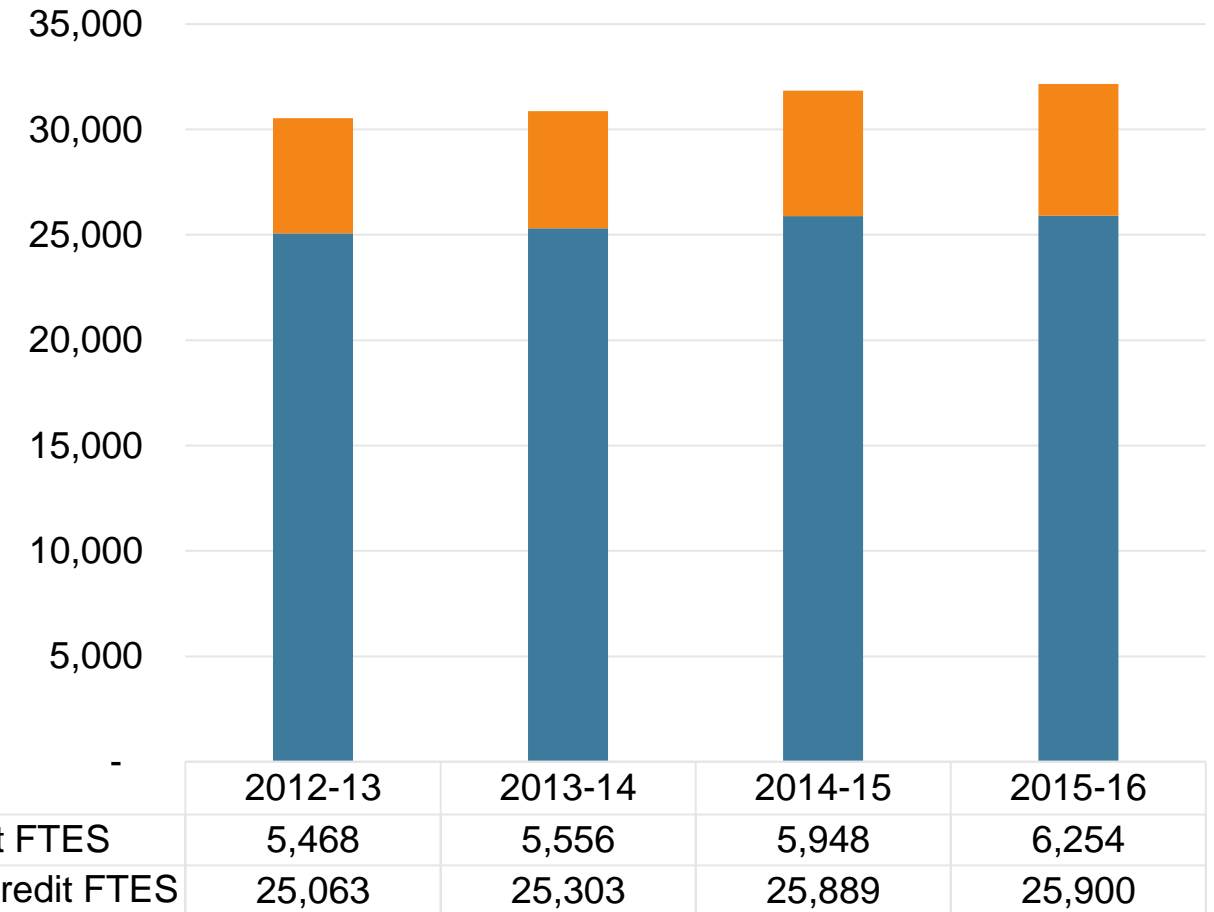
Analysis of the College's Students and Staff

Student Headcount

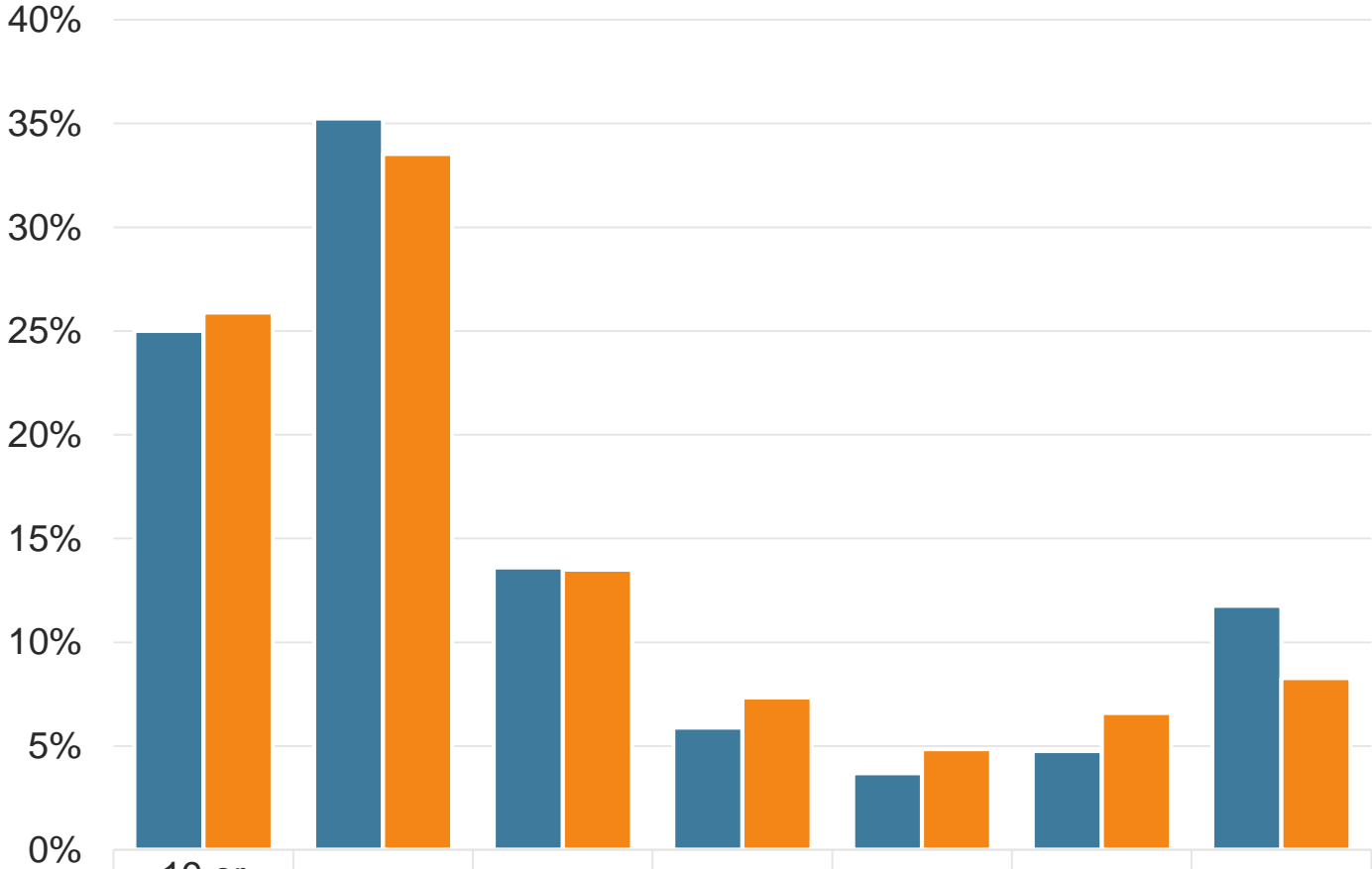
Student Headcount - Annual



FTES - Annual

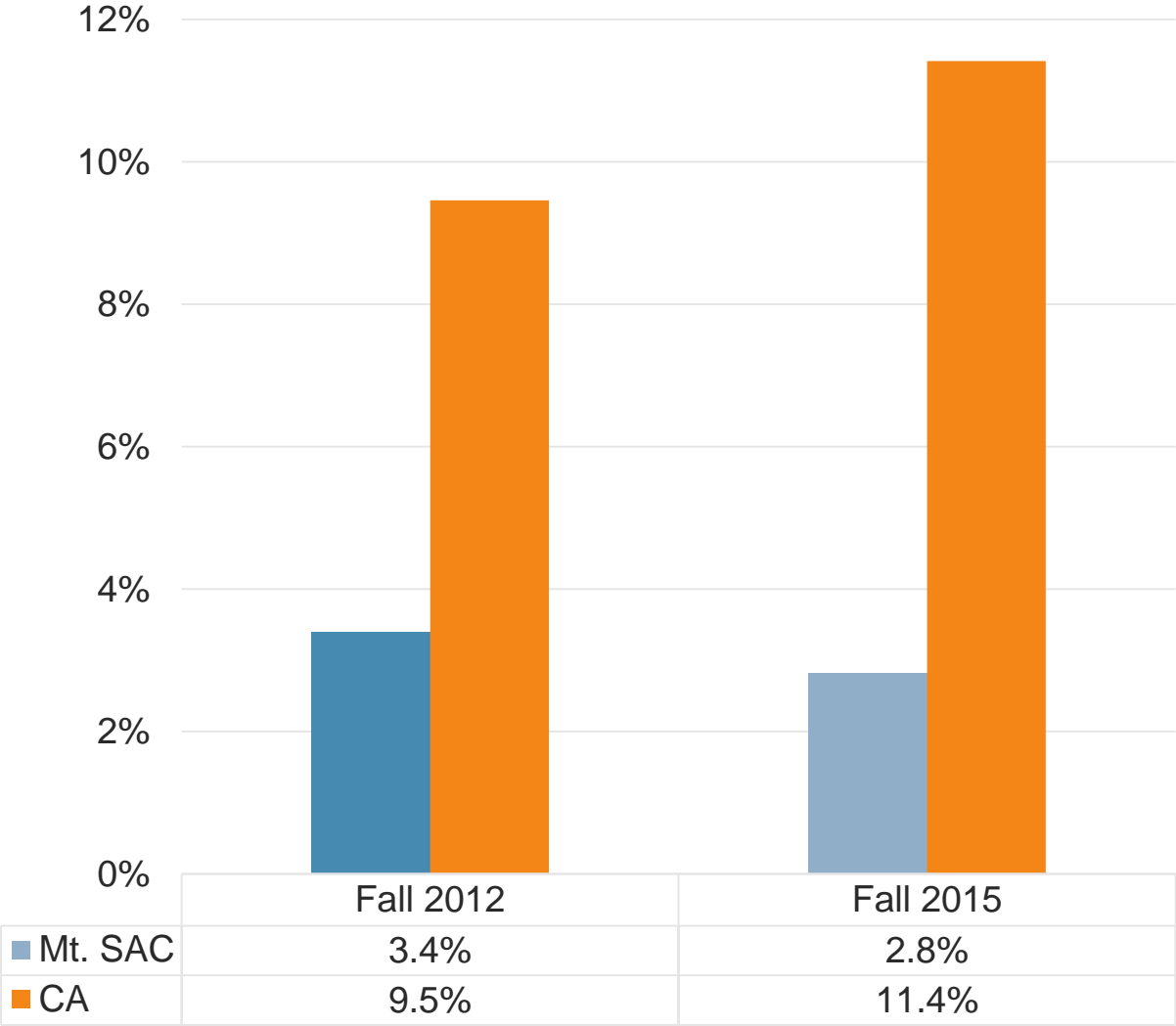


Student Age

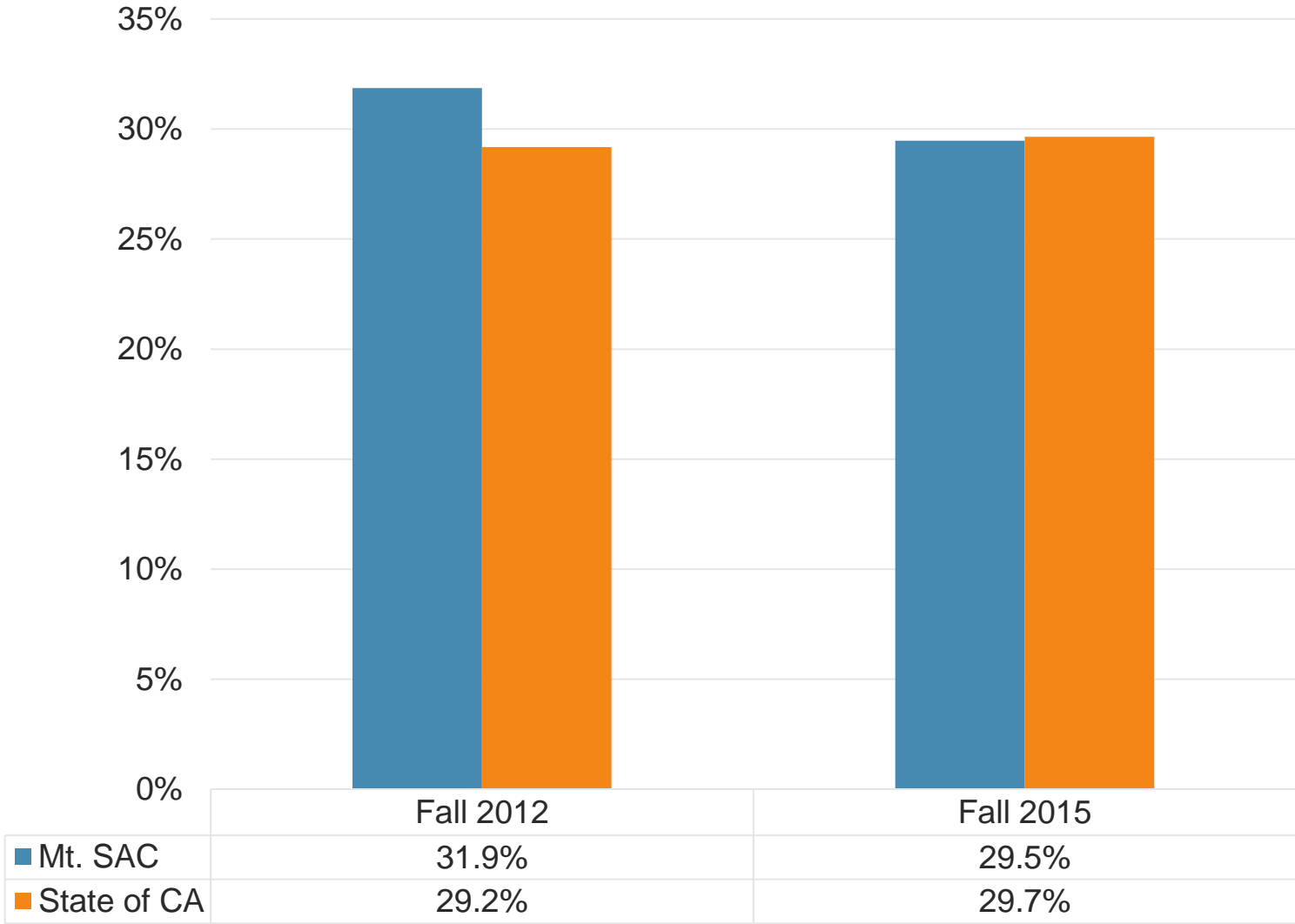


	19 or Less	20 to 24	25 to 29	30 to 34	35 to 39	40 to 49	50 +
■ Mt. SAC	25.0%	35.2%	13.6%	5.9%	3.7%	4.8%	11.8%
■ State of CA	25.9%	33.5%	13.5%	7.3%	4.9%	6.6%	8.3%

Distance Education - % of FTES

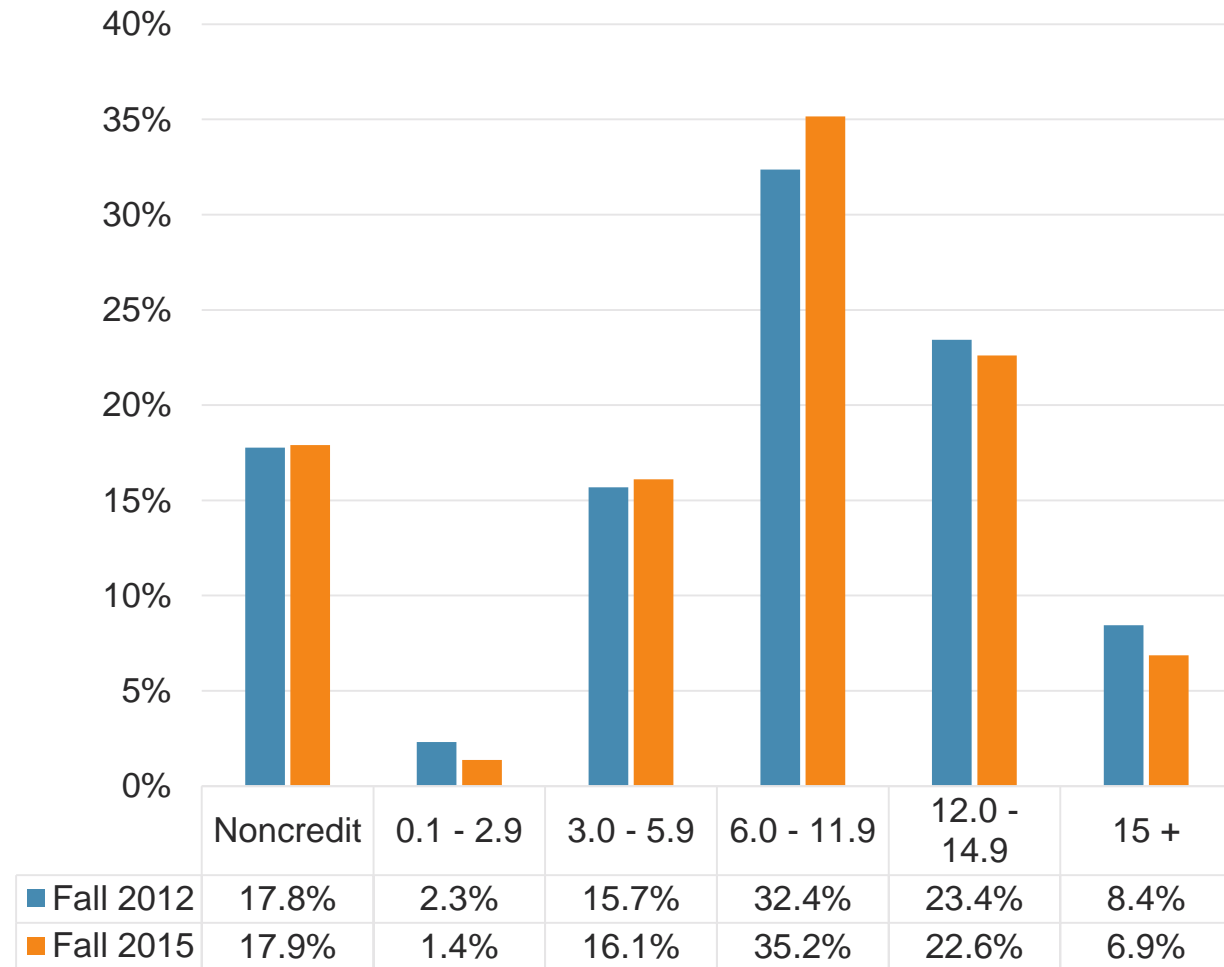


Full-Time Students as % of Total

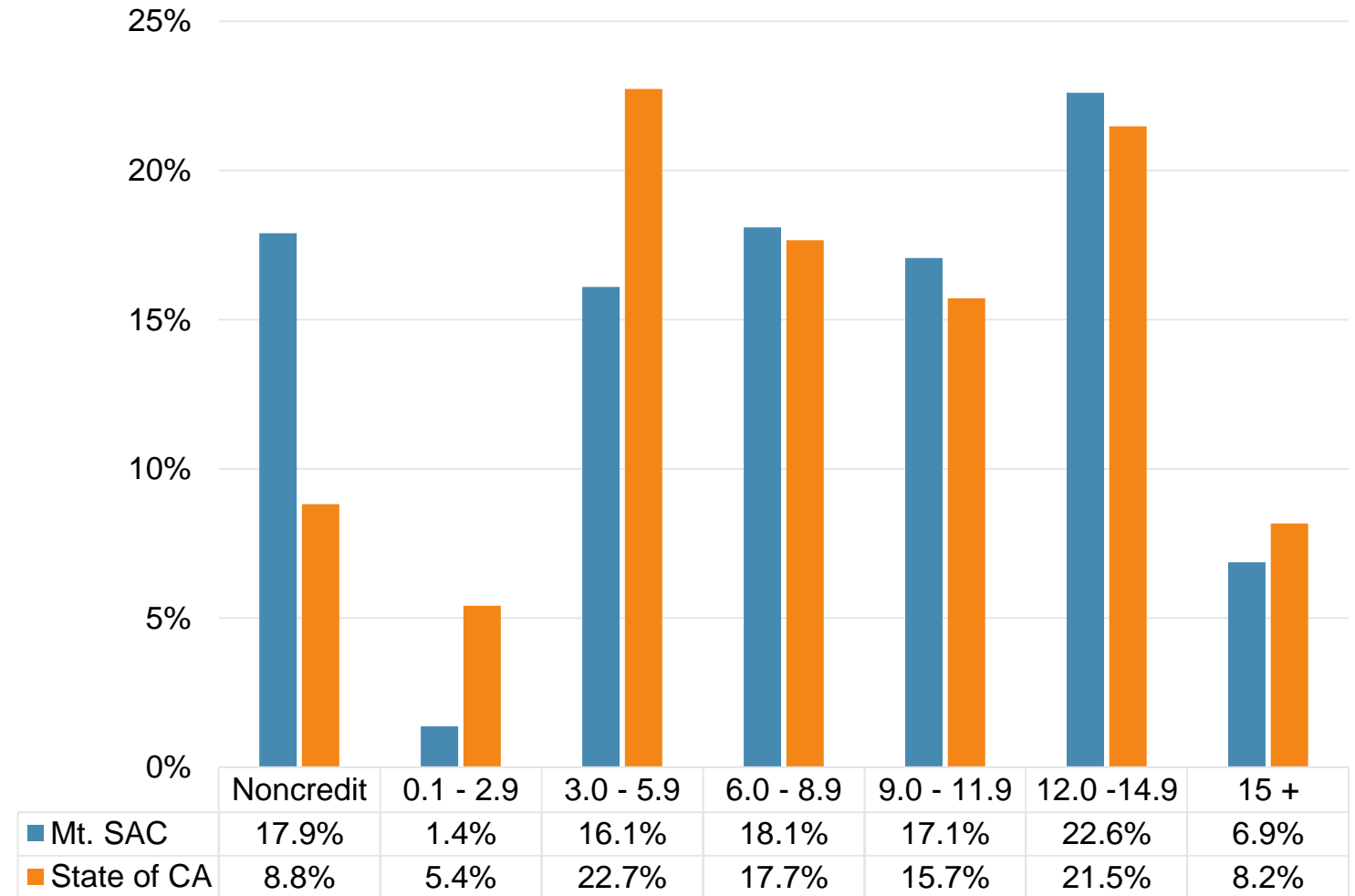


Units Taken

Units Taken Fall 2012 and 2015



Units Taken Fall 2015

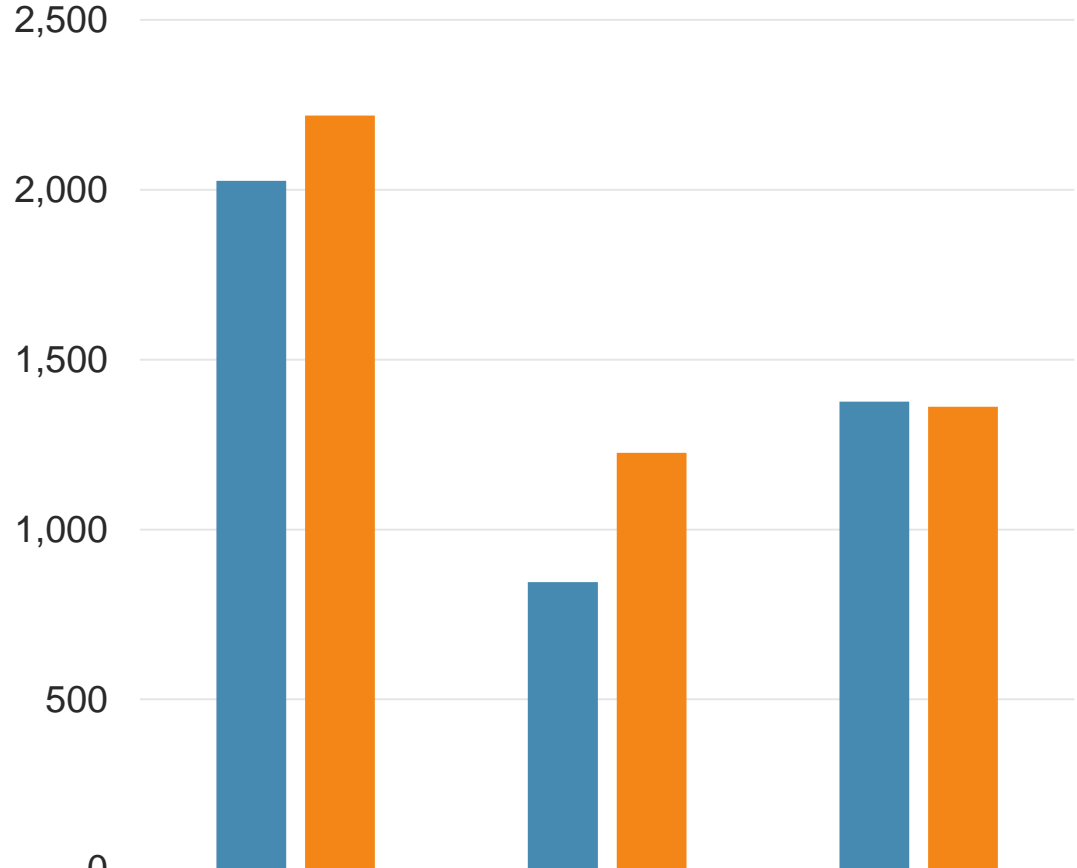


Race and Ethnicity

	Fall 2012	Fall 2015	Change (Percentage Points)
African-American	4.4%	3.6%	-0.7%
American Indian/ Alaskan Native	0.2%	0.2%	-0.0%
Asian	17.6%	18.6%	+1.0%
Filipino	3.6%	3.3%	-0.3%
Multi-Ethnicity	2.2%	2.4%	+0.2%
Pacific Islander	0.3%	0.2%	-0.1%
Unknown	6.8%	5.5%	-1.3%
White Non-Hispanic	13.9%	11.5%	-2.4%
Hispanic	51.0%	54.6%	+3.6%

Source: California Community Colleges Chancellor's Office, Data Mart

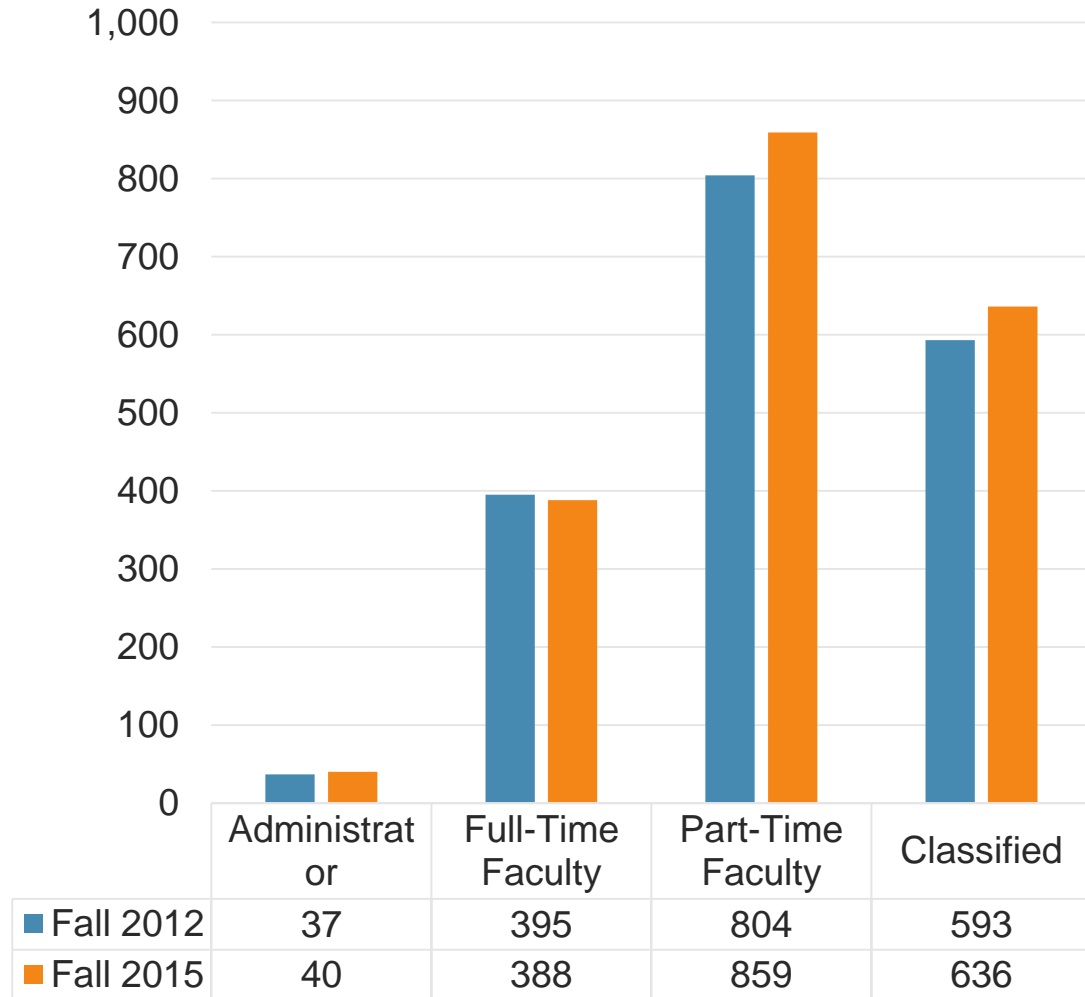
Degrees and Certificates



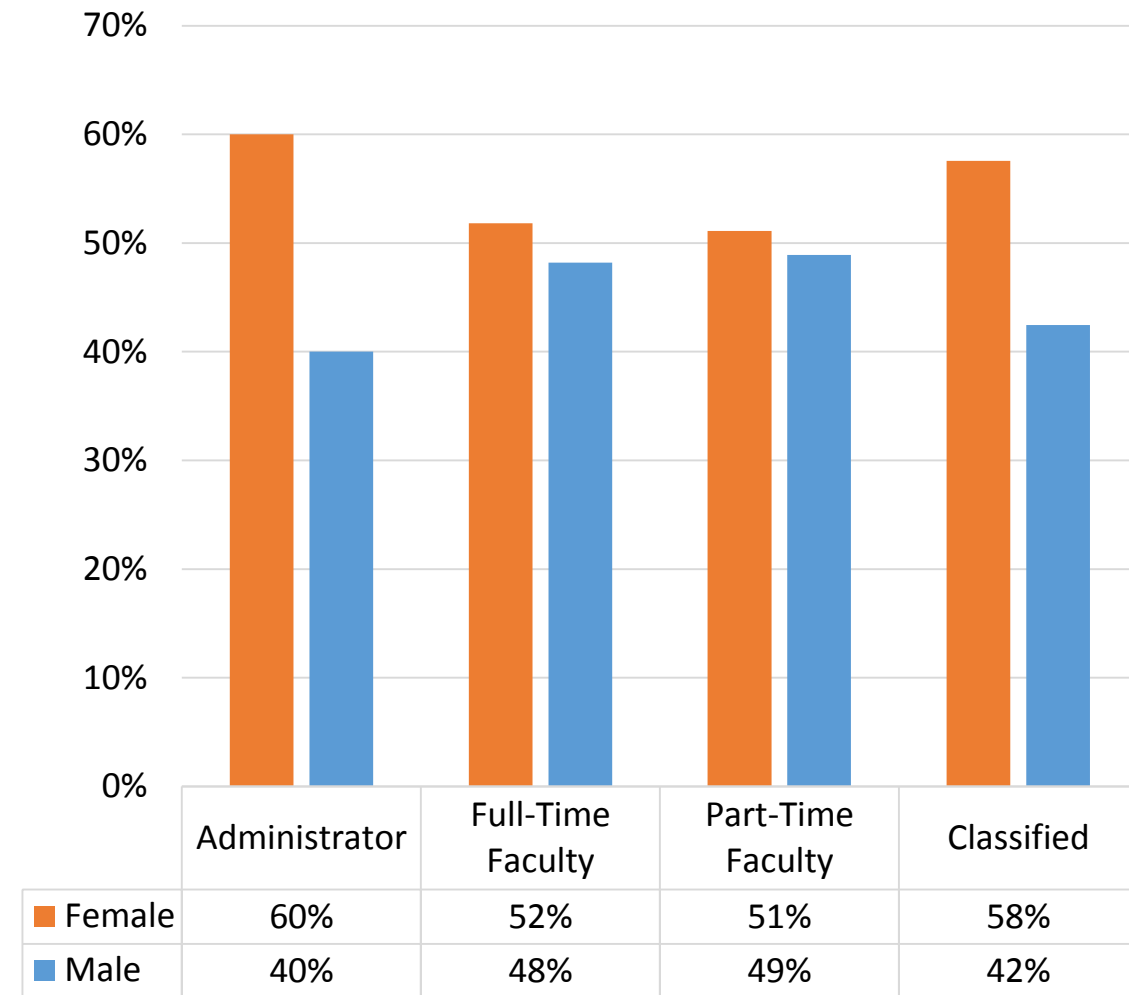
	Total Degrees	Total Certificates	Total Noncredit Awards
■ Annual 2012-2013	2,026	845	1,376
■ Annual 2015-2016	2,219	1,226	1,361

Faculty

Faculty and Staff Headcount



Faculty and Staff by Gender



Faculty and Staff Race and Ethnicity


	Administrators	Full-Time Faculty	Part-Time Faculty	Classified Staff
Asian	41.4%	12.4%	15.5%	13.4%
Hispanic	0.8%	14.9%	17.3%	41.4%
African-American	13.4%	5.2%	4.0%	6.8%
Am. Indian/ Alaskan Native		0.3%	0.2%	0.8%
Multi-Ethnicity	0.0%	2.1%	1.5%	0.8%
Pacific Islander	0.0%	1.3%	0.5%	0.6%
Unknown	0.6%	2.3%	9.8%	2.5%
White Non-Hispanic	2.5%	61.6%	51.2%	33.8%



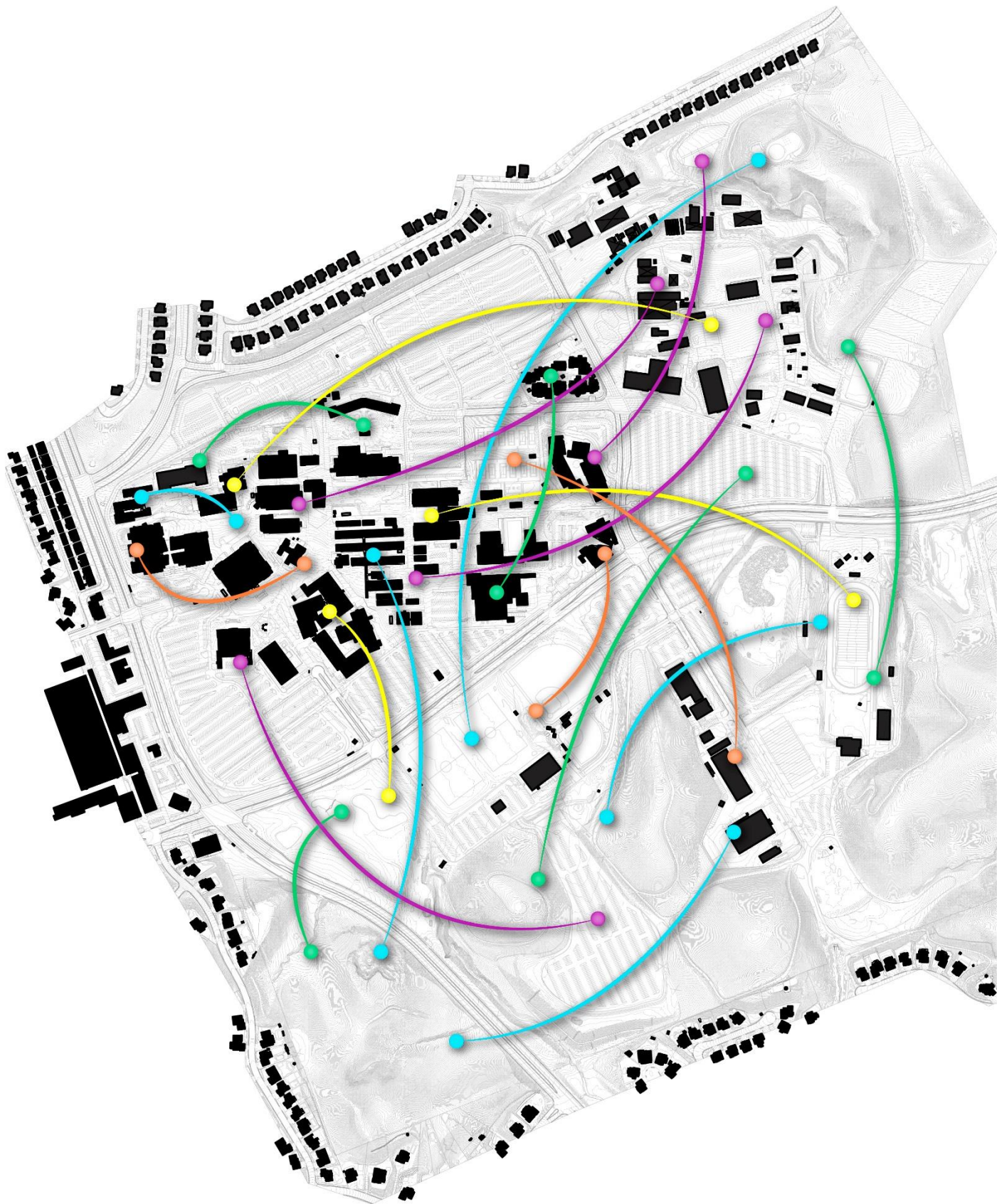
QUESTIONS + COMMENTS



LANDSCAPE BEST PRACTICES



LANDSCAPE MASTER PLAN ANALYZING SYSTEMS IDENTIFYING OPPORTUNITIES



Is Mt. SAC a
RESOURCE EFFICIENT
campus?



Green.OleMiss.edu

Food waste composting at University of Mississippi



Patriot Industries West

Rainwater cistern at University of Texas LBJ Wildflower Center



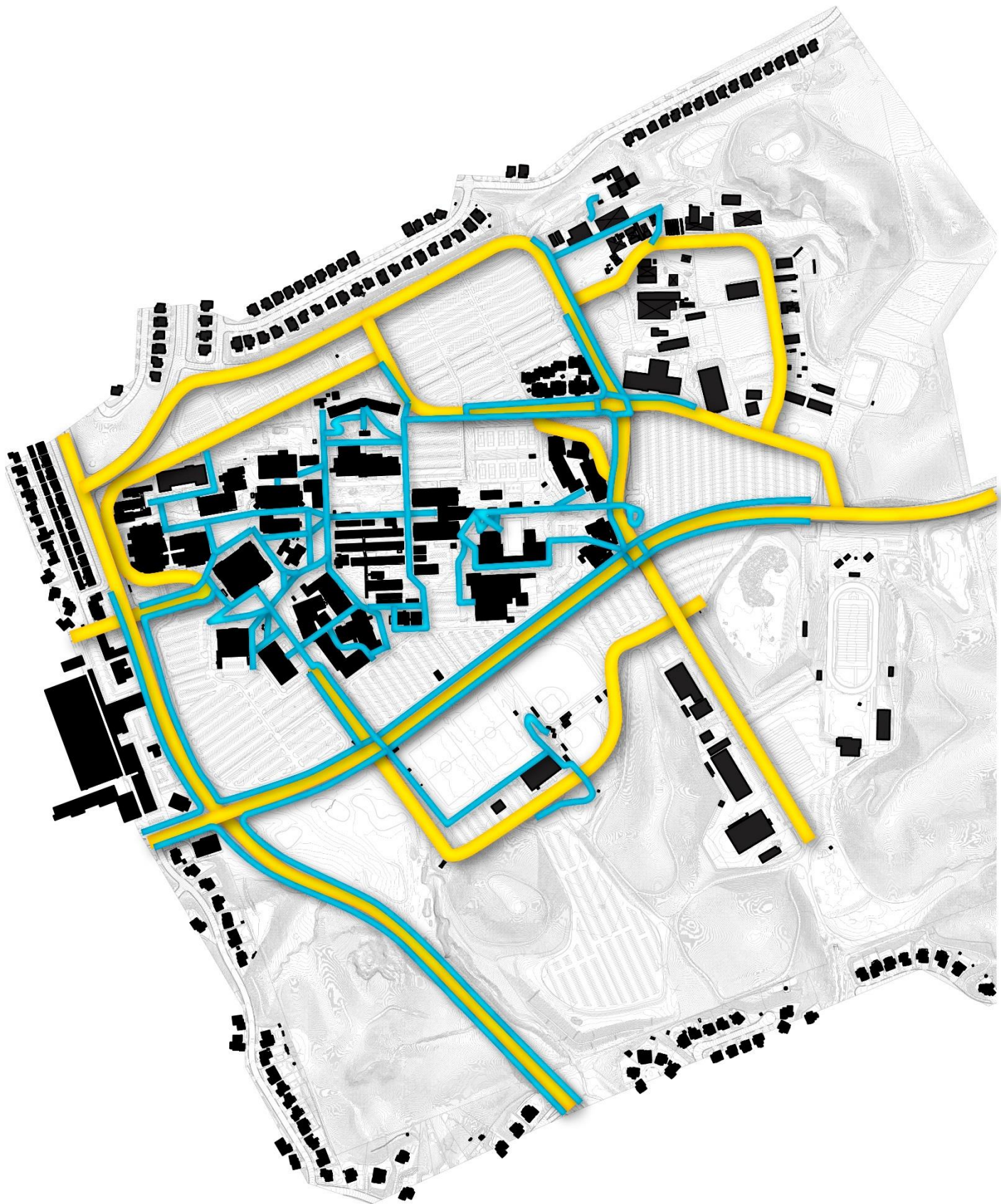
SWA

Solar panels at UC Davis



SWA

Drought-tolerant planting at Stanford



Is Mt. SAC a
CONNECTED
campus?



SWA

Lasuen Mall pedestrian corridor at Stanford



SWA

Accessible grade changes at Stanford



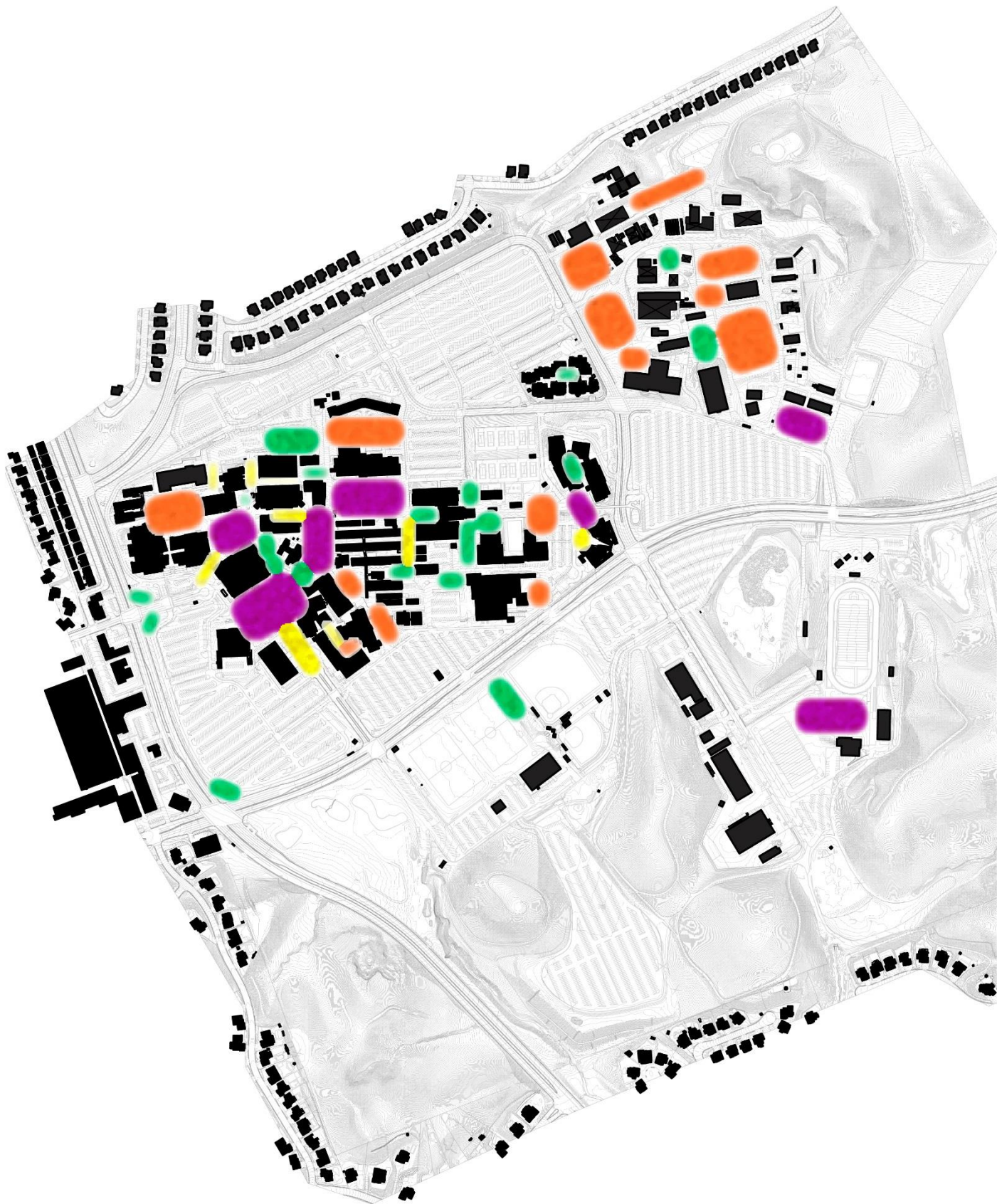
SWA

Public transit stop at CSU Long Beach



SWA

Shaded bike parking at UCLA



**Is Mt. SAC an
ICONIC
campus?**



SWA

Outdoor study space at CSU Long Beach



Event lawn at Stanford



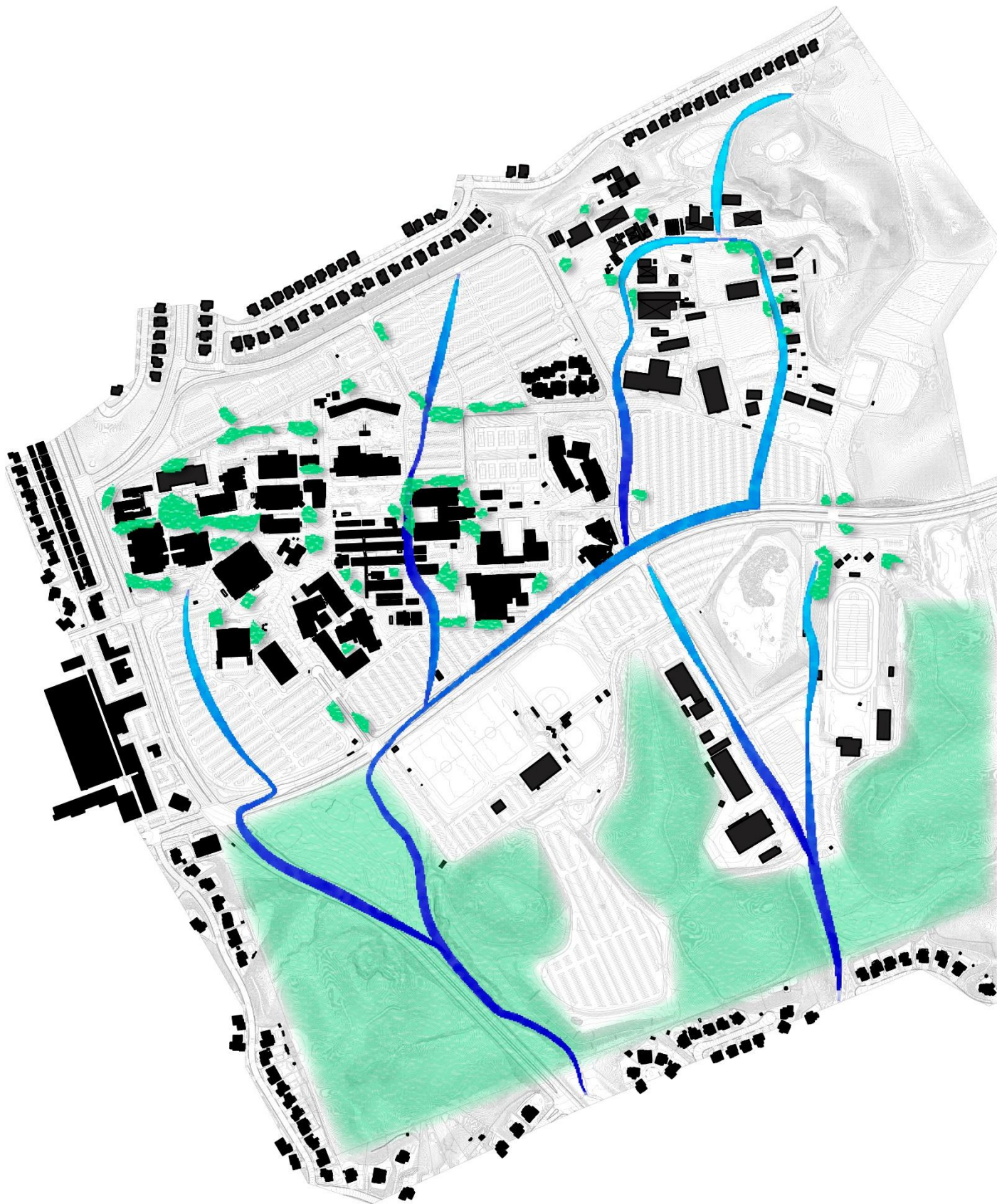
SWA

Allées at UCLA



SWA

Passive open space at Stanford



**Is Mt. SAC an
ECOLOGICAL
campus?**



SWA

Habitat enhancement & stream restoration at Jeffrey Open Space



SWA

Stormwater and erosion control at CSU East Bay



Trees at UCLA



Green roof at California Academy of Sciences

LANDSCAPE MASTER PLAN NEXT STEP

- Existing conditions analysis for main campus, wildlife sanctuary, and farm
- Results to be presented and discussed at February's Master Plan Steering Task Force Meeting (MPSTF Meeting #3)



LANDSCAPE MASTER PLAN DISCUSSION

- What issues and opportunities do you see with the campus landscape?



Next Steps

/ PUBLIC OUTREACH

/ EMP

/ FMP

Next Steps

/ PUBLIC OUTREACH

- / CFPAG MEETINGS – during key stages of the process
- / TARGETED OUTREACH – with key stakeholders
- / POP-UP STUDENT WORKSHOPS – gather input from Students
- / TRUSTEE AREA OPEN HOUSES – inform/gather feedback from the Public
- / WEBSITE UPDATES + ONLINE SURVEYS – during the process

Next Steps

/ EMP

/ Complete Data Portfolio

/ Student Services and Administrative Services

- Prepare Descriptions Draft #1
- First Interviews to Review Draft #1: February 9
- Prepare Descriptions Draft #2

Next Steps

/ EMP

- / Instructional Disciplines: Prepare Draft #2 based on interviews
- / For All Programs and Services: Second interviews to Review Draft #2s: March 20 - 21

Next Steps

/ FMP

- / EXISTING CAMPUS ANALYSIS
- / SUSTAINABILITY PLANNING PROCESS
- / TASK FORCE RETREAT + GROUP TOUR

Next Meeting

FEBRUARY WORKSHOP (FEBRUARY 10, 10AM – 2PM)

/ BUILDING 46, TRAINING ROOM

THANK YOU